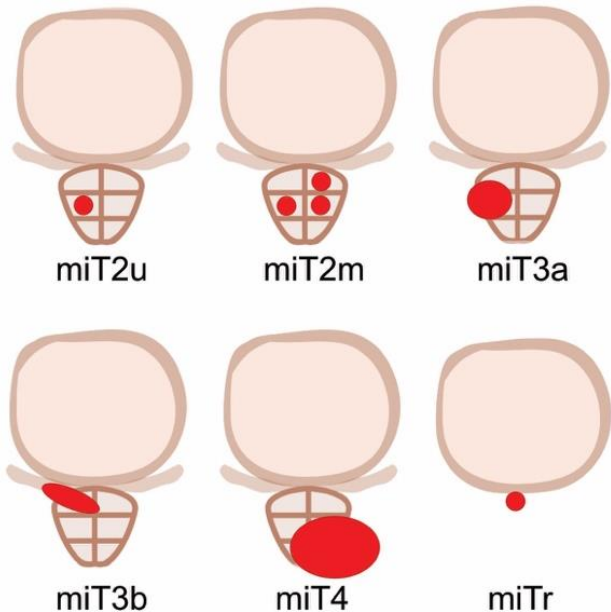


Prostate (bed) (T)

LOCALIZE regions



RATE lesions

PRIMARY-Score / PSMA-expression score
 benign (T0) vs. malignant (T2-4)

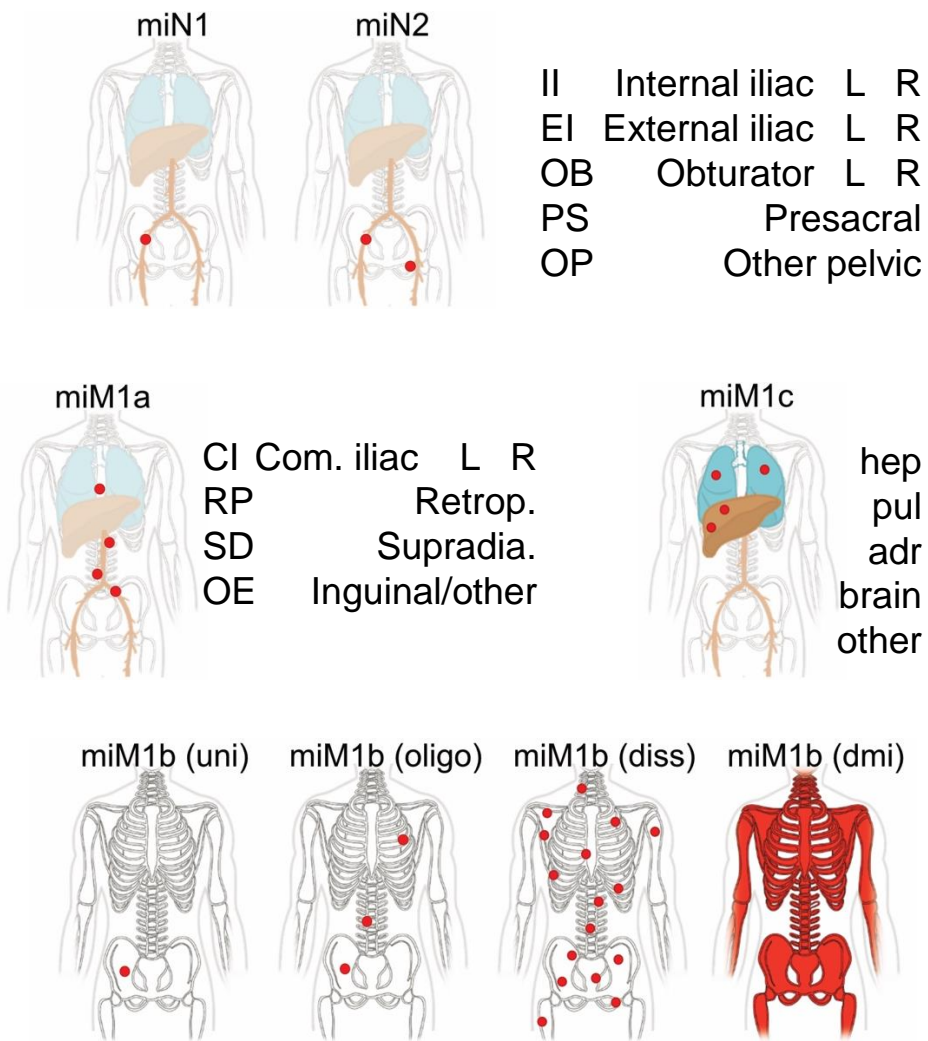
PRIMARY	Pattern	PSMA expr.*
1	No dominant intra-prostatic pattern	0-1
2	Diffuse transition zone activity or symmetrical central zone activity inside margins	1-2
3	Focal transition zone activity	2-3
4	Focal peripheral zone activity	1-3
5	Intense uptake	3

Emmett et al. J Nucl Med 2022. doi: 10.2967/jnumed.121.263448.

* for definition of the PSMA-expression Score, see Nodes (N) and Metastases (M)

Nodes (N) and Metastases (M)

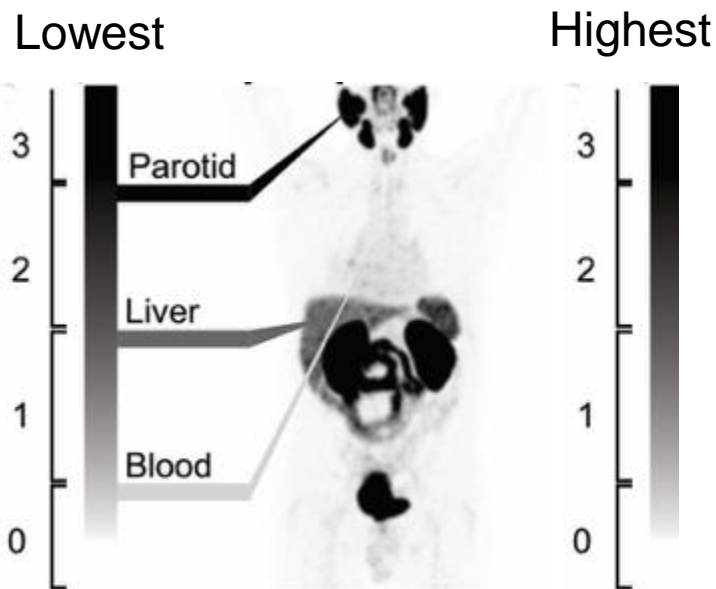
LOCALIZE regions



RATE lesions

PSMA-expression score[§]

§ Score 2+ lesions are regarded malignant;
 Score 2+ lesions are eligible for PSMA RLT



Second Version of the Prostate Cancer Molecular Imaging Standardized Evaluation Framework Including Response Evaluation for Clinical Trials (PROMISE V2). Seifert R, Emmett L, ..., Fendler WP, Eiber M. Eur Urol. 2023 May;83(5):405-412. doi: 10.1016/j.eururo.2023.02.002.

PROMISE miTNM codeline

for malignant regions (PSMA-expression score ≥ 2)
 miT__ N__ (_____) M__ (_____) M__ (_____) M__ (_____)
 for T0-4: PRIMARY ____
 for N1/M1: PSMA-expression score: lowest ____ highest ____